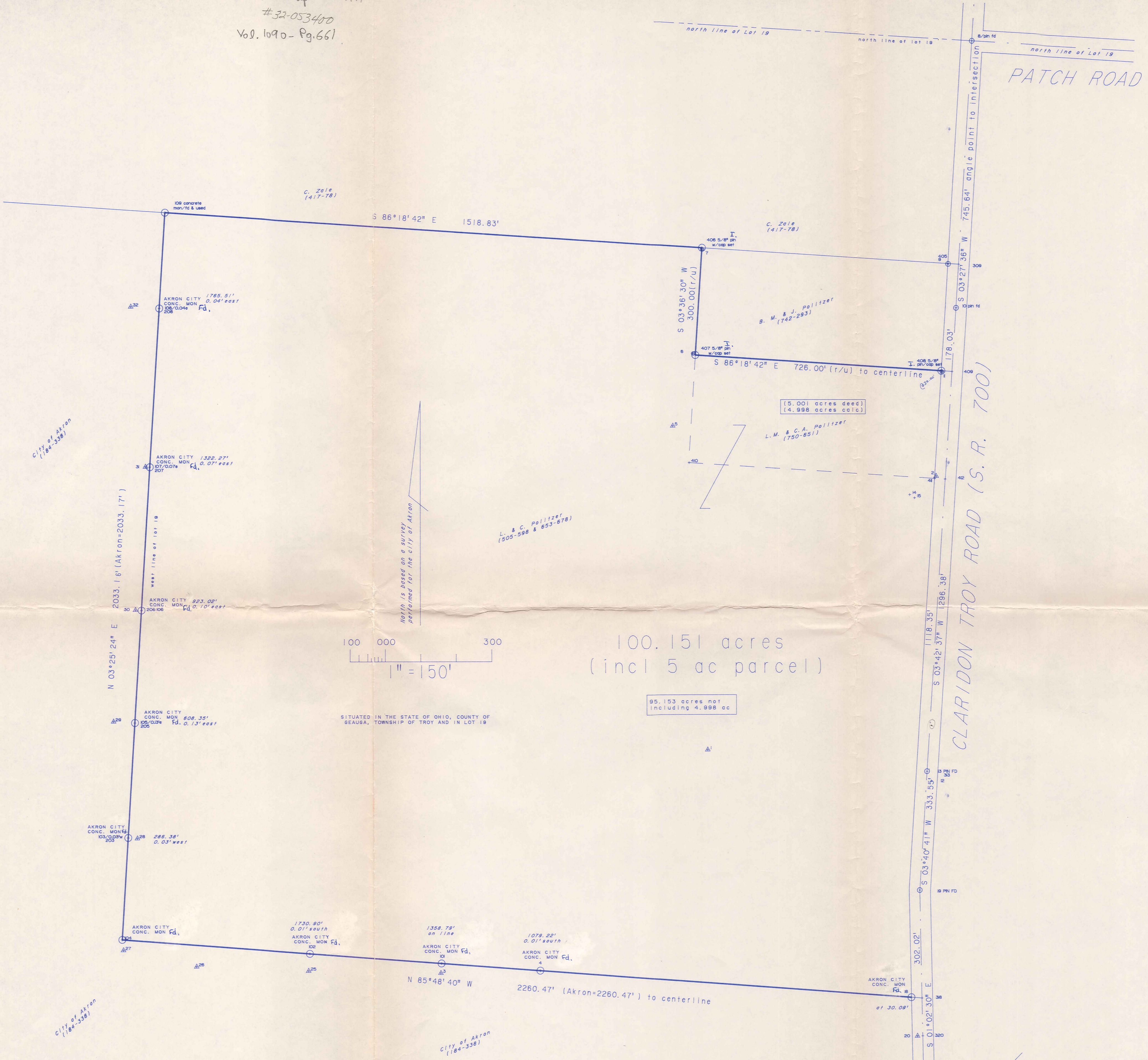


Politzer
 picked up 1-22-1997
 #32-053400
 Vol. 1090 - Pg. 661

(TR000207
 TR000207



(TR000207)

DESCRIPTION OF SURVEY of 100.151 acres ~~100-2861~~

SITUATED in the State of Ohio, County of Geauga, Township of Troy and in ~~Lot~~ Section 19.

BEGINNING at a pin found at the intersection of the centerlines of Patch Road and S.R. 700, also known as Claridon Troy road and on the north line of Lot 19;

Section

THENCE South 03 degrees 27 minutes 36 seconds West, along the centerline of S.R. 700, a distance of 745.64' to a pin found at an angle point in S.R. 700;

Section

THENCE South 03 degrees 42 minutes 37 seconds West, continuing along said centerline, a distance of 178.03' to a point at the southeast corner of B.M. & J. Politzer and being the TRUE PLACE OF BEGINNING for the parcel being described;

Section

THENCE South 03 degrees 42 minutes 37 seconds West, continuing along said centerline, a distance of 1118.35' to a point found;

Section

THENCE South 03 degrees 40 minutes 41 seconds West, along said centerline, a distance of 333.55' to a point found;

Section

THENCE South 01 degree 02 minutes 30 seconds East, continuing along said centerline, a distance of 302.02' to a point at the northeast corner of the City of Akron (184-338);

Section

THENCE North 85 degrees 48 minutes 40 seconds West, along the north line of the City of Akron and passing monuments found for the City of Akron found at 30.09', 1079.22' (0.01's), 1358.79', and 1730.90' (0.01's), a distance of 2260.47' to a monument found on the west line of Lot 19;

Section

THENCE North 03 degrees 25 minutes 24 seconds East, along the east line of the City of Akron, west line of Lot 19 and passing monuments found at 286.38' (0.03'w), 608.35' (0.13'e), 923.02' (0.10'e), 1322.27' (0.07'e) and 1765.51' (0.04'e), a distance of 2033.16' to a City of Akron monument found on the south line of Zale (417-78);

Section

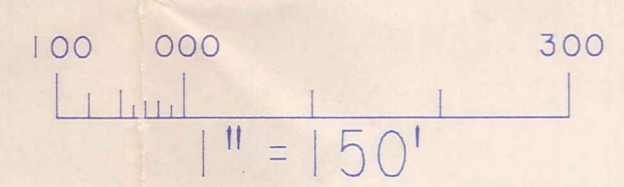
THENCE South 86 degrees 18 minutes 42 seconds East, along the south line of Zale, a distance of 1518.83' to a 5/8\" rod with I.D. Cap set at the northwest corner of B.M. & J. Politzer (742-293);

Section

THENCE South 03 degrees 36 minutes 30 seconds West, along the west line of said Politzer, a distance of 300.00' to a 5/8\" rod with I.D. Cap set at the southwest corner of said Politzer;

Section

THENCE South 86 degrees 18 minutes 42 seconds East, along the south line of said Politzer and passing through a 5/8\" rod with I.D. Cap set 30.00' from the centerline, a distance of 726.00' to the TRUE PLACE OF BEGINNING, containing 100.151 acres more or less and subject to all legal highways and easements as surveyed by John N. Francis, Professional Surveyor S-6916 in May/June, 1992.



100.151 acres
 (incl 5 ac parcel)

95.153 acres net
 including 4.988 ac

SITUATED IN THE STATE OF OHIO, COUNTY OF
 GEauga, TOWNSHIP OF TROY AND IN LOT 19

I HEREBY CERTIFY THAT THIS PLAT IS AN ACCURATE REPRESENTATION OF AN ACTUAL SURVEY PERFORMED BY ME AND COMPLETED IN June, 1992 AND IS AN OPINION BASED ON INFORMATION OF RECORD COMPARED TO THE PHYSICAL LOCATION OF EVIDENCE LOCATED IN ACCORDANCE TO OHIO REVISED CODE 4733-37. COORDINATES GIVEN ARE ON AN ASSUMED DATUM AND ARE FOR REFERENCE AND CALCULATION PURPOSES ONLY

SURVEY PLAT AND LEGAL
 DESCRIPTION APPROVED
 PER R.C. 315.251
 R.S. 1/22/1997 Revised
 GEauga COUNTY ENGINEER

JOHN N. FRANCIS
 PROFESSIONAL SURVEYOR S-6916

TRO 00207

Politzer

TRO 00207

Politzer
Picked Up Date 01/22/97
#32-053400
Vol. 1090 Pg. 0661

DESCRIPTION OF SURVEY of 100.151 acres

SITUATED in the State of Ohio, County of Geauga, Township of Troy on in Section 19.

BEGINNING at a pin found at the intersection of the centerlines of Patch Road and S.R. 700, also known as Claridon Troy road and on the north line of Section 19;
iron

THENCE South 03 degrees 27 minutes 36 seconds West, along the centerline of S.R. 700, a distance of 745.64' to a iron pin found at an angle point in S.R. 700;

THENCE South 03 degrees 42 minutes 37 seconds West, continuing along said centerline, a distance of 178.03' to a point at the southeast corner of B.M. & J. Politzer and being the TRUE PLACE OF BEGINNING for the parcel being described;

THENCE South 03 degrees 42 minutes 37 seconds West, continuing along said centerline, a distance of 1118.35' to a iron pin found;

THENCE South 03 degrees 40 minutes 41 seconds West, along said centerline, a distance of 333.55' to a iron pin found;

THENCE South 01 degrees 02 minutes 30 seconds East, continuing along said centerline, a distance of 302.02' to a point at the northeast corner of the City of Akron (184-338);

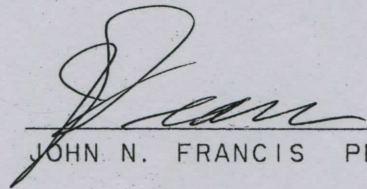
THENCE North 85 degrees 48 minutes 40 seconds West, along the north line of the City of Akron and passing monuments found for the City of Akron found at 30.09', 1079.22' (0.01's), 1358.79', and 1730.90' (0.01's), a distance of 2260.47' to a monument found on the west line of Lot 19;

THENCE North 03 degrees 25 minutes 24 seconds East, along the east line of the City of Akron, west line of Lot 19 and passing monuments found at 286.38' (0.03'w), 608.35' (0.13'e), 923.02' (0.10'e), 1322.27' (0.07e) and 1765.51' (0.04'e), a distance of 2033.16' to a City of Akron monument found on the south line of Zale (417-78);

THENCE South 86 degrees 18 minutes 42 seconds East, along the south line of Zale, a distance of 1518.83' to a 5/8" rerod with I.D. Cap set at the northwest corner of B.M. & J. Politzer (742-293);

THENCE South 03 degrees 36 minutes 30 seconds West, along the west line of said Politzer, a distance of 300.00' to a 5/8" rerod with I.D. Cap set at the southwest corner of said Politzer;

THENCE South 86 degrees 18 minutes 42 seconds East, along the south line of said Politzer and passing through a 5/8" rerod with I.D. Cap set 30.00' from the centerline, a distance of 726.00' to the TRUE PLACE OF BEGINNING, containing 100.151 acres more or less and subject to all legal highways and easements as surveyed by John N. Francis, Professional Surveyor S-6916 in May/June, 1992.



JOHN N. FRANCIS PROFESSIONAL SURVEYOR S-6916

**SURVEY PLAT AND LEGAL
DESCRIPTION APPROVED
PER R.C. 315.251**

R.S. 1, 22, 1997 Revised
GEAUGA COUNTY ENGINEER